

CONTENTS

NO. OF PART	SUBJECT	PAGE
	ABSTRACT	3
1	FINDING THE MAGNITUDE OF THE PARSEC	5
2	THE MEANING OF THE SKIES AND THE EARTH	8
3	THE PARADISE	15
4	THE HOLY VALLY (TEWA)	18

NO. OF PART	SUBJECT	PAGE
5	THE BIG SHIP OF NOH	20
6	THE POSITION ON EARTH THAT THE PROPHET LAST ADAM HAS LANDED IN IT FROM THE SKY	21
7	THE GREEN ISLAND	29
8	THE ENTRANCE OF IL IMAM ALMAHDI TO THE IRAQ	30
9	ASHAB AL KAHF ((THE PERSONS OF THE CAVE))	31

NO. OF PART	SUBJECT	PAGE
10	THE EARTH OF JUDGMENT	41
11	THEO AL KARNAIN ((THE PAIRED WOUND MAN))	42
12	THE HELL	49

.....

ABSTRACT: I FOUNDED IN THIS MANUSCRIPT THE MAGNITUDE OF THE PARSEC , EXPLAINED THE MEANING OF THE SKIES AND THE EARTH, EXPLAINED THE POSITION OF THE PARADISE ,FOUNDED IT'S DOOR SPEED AROUND EARTH, I FOUNDED THE POSITION OF THE HOLY VALLY THAT ALLAH HAD TALKED TO THE PROPHET MOSA, AND FOUNDED THE LOCATION OF THE SHIP OF THE PROPHET NOH , THE POSITION THAST THE PROPHET LAST ADAM HAS LANDED TO ON EARTH ; IT'S THE ADAM'S PEAK IN SIRILANKA, THE LOCATION OF THE GREENISLAND OF IL IMAM ALMAHDI, THE ENTERANCE OF IL IMAM AL MAHDI TO IRAQ; IT'S SEMAWA, THE POSITION OF THE CAVE OF THE ((ASHAB AL KAHF)): THOSE WHOM SLEPT FOR 300 SOLAR YEARS, 309 LUNAR YEARS IN A CAVE , THEY ARE A

**LIVE , IT'S IN TURKEY ABOUT 30 KM 887 METERS AND
11.1112 CM FROM EPHESUS , THE EARTH OF THE
JUDGMENT THAT ALLAH WILL JUDGE THE CREATURES
ON IT IN THE DAY OF JUDGMENT AND IT IS IN BAGHDAD,
JADRIEA, UNIVERSITY OF BAGHDAD CAMPUS, THEN THE
TRAVEL OF THE ((THEO AL KARNAIN)) THE PAIRED
WOUND MAN AND THE LOCATION OF THE HOT SOURCE :
IN HAWAI, THE YA"JOJ AND MA"JOJ PLACE : AT THE
SOUTH EAST OF RUSSIA, AND THE LOCATION OF THE
HELL, IT'S DOOR TO THE WORLD IS IN THE BARHOOT
VALLY IN YEMEN.**

KEYWORDS:PHYSICS, LOCATIONS, KOR'AN

PART 1 :

FINDING THE MAGNITUDE OF THE PARSEC

IMAM ALI HAD BEEN ASKED ABOUT THE LENGTH AND WEDTH OF THE SUN AND THE MOON, HE ANSWERED: ((900 PARSECS X 900 PARSECS)), AND HE HAD BEEN ASKED ABOUT THE LENGTH OF THE PLANET AND IT'S WEDTH , HE ANSWERED : ((12 PARSECS X 12 PARSECS)).

IF WE SUPPOSE THE MOON'S ORBIT AROUND EARTH AS A REFERENCE SO THE PARSEC WILL BE:

$$\begin{aligned} \text{THE PARSEC} &= \text{MOON'S DIAMETER}/900 \\ &= 3474.8/900 = 3.860888889 \text{ KM} \end{aligned}$$

AND TO OBTAIN THE SUN'S DIAMETER = MOON'S DIAMETER * (THE DISTANCE OF THE SUN FROM EARTH/THE DISTANCE OF THE MONN FROM THE EARTH)

BECAUSE THE MOON'S ORBIT IS TAKEN AS THE REFERENCE;

SUN'S DIAMETER

$$= 3474.8 * 400$$

$$= 1389920 \text{ KM}$$

AND SINCE THE PARSEC=3 MILES , SO THE MILE

1 MILE =1.286962963 KM

ON IT THE DIAMETER OF THE PLANET (LIKE VENUS, MARS, JUPITER, ETC.) AS IT ON THE MOON'S ORBIT EQUALES =46.33066667 KM.

AND BY SUPPOSE THE DISTANCE OF A PLANET FROM THE EARTH –LIKE VENUS , MERCURY, AND MARS- EQUALES TO THE DISTANCE BETWEEN OF THE SUN FROM EARTH , SO THE DIAMETER OF THE PLANET BE =18532.26667 KM.

AND WITH RESPECT TO THE FAR PLANETS LIKE JUPITER AND URANUS THIS EQUATION EXPLAINE THE BIG SIZE OF THERES VOLUMES, I.E. THE BIG DISTANCE OF THE PLANET FROM THE EARTH, THE BIGGEST IT'S SIZE((VOLUME)) – AS THE DISTANCE OF THE PLANET FROM THE EARTH INCREASES , IT'S SIZE INCREASES-BECAUSE IT'S PROJECTION OF THE MOON'S ORBIT IS ((12 PARSECS)). AND THIS MEANS THAT PLUTO IS NOT A PLENT AND THIS INDICATE THAT ISLAM ADVANCED FROM NASA IN TIME BECAUSE NASA AFTER 2000 AFTER THE TRUE CHRIST BIRTH COSIDERED THAT THE PLUTO IS NOT A PLANET.

AND THIS INDICATE THAT THE DISTANCE OF THE PLANETS FROM THE EARTH RELATED WITH PERIODE OF THE CREATION OF THE PLANETS.

AND SO THE DISTANCE OF THE MOON FROM THE EARTH IS 100000 PARSECS , AND THE DISTANCE OF THE SUN FROM THE EARTH IS 40 MILLIONS PARSECS, AND THE CIRCUMESTANCES OF THE PLANET EARTH IS 10731 PARSECS.

RESULTS: I PUTTED A THEORY -GEOMETRY- TO FIND THE SIZE OF ANY PLANET ACCORDING TO IT'S DISTANCE FROM THE EARTH. AND IF WE PUTTED THE EARTH IN THAT THEORY WE WILL GET THE SIZE OF THE EARTH , AND WE FIND THAT PLUTO IS NOT APLANET BECAUSE THE THEORY DID NOT COINCIDE ON IT , THIS APROVE THAT THE ISLAM STATED-OR DISCOVERED- THAT THE PLUTO IS NOT A PLANET BEFORE NASA.

PART 2

THE MEANING OF THE SKIES AND THE EARTH



EARTH AS SHOWN FROM THE SKY

I EXPLAIN HERE THE MEANING OF THE SKIES AND EARTH IN KOR'AN AND IN OUR SPEECH. THE SKIES ARE LAYERED REGIONS ABOVE THIS PLANET ((THE EARTH)).

EVERY EARTH PLANET HAVE SKIES, FOR EXAMPLE FOR EARTH-LIKE PLANET IN OTHER SOLAR SYSTEM THERE ARE SKIES. AND THE EARTH MEANS THE PLANET EARTH.

AS SUPPOSE THAT THERE IS ONE PLANET EARTH IN EVERY SOLAR SYSTEM.

BUT THE MEANING OF THESE WORDS : ((AND FROM THE EARTH LIKE THEM)) , SEVEN EARTHS, HERE MEANS THE SEVEN LAYERS OF EARTH PLANET.

((ALLAH CREATED SEVEN SKIES AND FROM THE EARTH LIKE THEM)).

THE UNIVERSE IS LARGER THAN THE SEVEN SKIES AND THE EARTH,

THE SEVEN SKIES ARE ASSOCIATED WITH THE PLANET EARTH IN EVERY SOLAR SYSTEM, SO THE UNIVERSE IS LARGER THAN THE SKIES AND EARTH BY BILLIONS BILLIONS BILLIONS TIMES.

THE SHAPE OF THE SKIES: THE SHAPE SEEMS LIKE SPHERE, IT'S CENTER IS THE CENTER OF THE EARTH PLANET

THE THICKNESS OF EVERY SKY= 500 WALK YEARS

THE DISTANCE BETWEEN TWO SEDUCTIVE SKIES=500 WALK YEARS

**THE EXPERIMENTALLY WOLK YEAR ((BY THE AUTHOR))=
(1.2M/S) * 3600* 24* 365 METERS**

=37843.200 KM

**THE THEORETICAL WALK YEAR ((FROM KOR'AN : SEE THE
RESEARCH : WALK YEAR))= (1.23 M/S) * 3600* 24*365
METERS= THE WALK YEAR = 38789.280 KM**

**NOTE: THE DISTANCES IN THE NEXT TWO TABLES ARE IN
((WALK YEARS))**

**THE SKY THICKNESS HEIGHT (LOWER,
UPPER)**

.....

1	500	500, 1000
2	500	1500, 2000
3	500	2500, 3000
4	500	3500, 4000
5	500	4500, 5000
6	500	5500, 6000
7	500	6500, 7000

SKY NO.	CELESTIAL BODY	HEIGHT
.....
1		
2		
3		
4	THE SUN	3750
5		
6		
7		

**IN THE ABOVE TABLE THE SUN COSIDERED
TO BE IN THE MIDLLE OF THE 4TH. SKY =
3500+ (500/2)=3750 WALK YEARS**

**AND ABOVE THE SEVEN SKY THE THRONE
OF ALLAH.**

THE WALK YEAR IN LIGHT SECONDS= WALK YEAR/ C

$$=38789.280/(2.99792458*10^5)$$

$$=0.12938711 \text{ LIGHT SECONDS}$$

**THE THICKNESS OF EVERY SKY= 500 WALK
YEAR = 500 *0.12938711**

= 64.69355543 LIGHT SECONDS

**THE DISTANCE BETWEEN THE EARTH
PLANET AND THE SUN = WALK YEAR * 3750**

=38789.280 * 3750 = 145 459 800 KM

WHILE NASA NUMBER IS = 149 600 000 KM

**THE RADIUS OF THE SKIES AND EARTH=
(EARTH PLANET DIAMETER/2) + 7000 WALK
YEARS**

=(12756.2/2) + 7000* 38789.280 KM

= (6378.1) + 271 524 960 KM

= 271 531 338.1 KM

THE RADIUS IN LIGHT SECONDS =

= 905.7310511 LIGHT SECONDS

=15.09551752 LIGHT MINUTES

THE DIAMETER OF THE SEVEN SKIES AND

THE EARTH

= 2* THE RADIUS

= 30.19103504 LIGHT MINUTES

THIS MEANS THAT SOME PLANETS LIKE JUPITER, URANUS , SATURN IN A POSITION ABOVE THE SEVEN SKY, THE DISTANCE BETWEEN EARTH AND JUPITER IS 8 LIGHT HOURS.

THE DEPTH OF "THARA" = EARTH PLANET RADIUS

THE " THARA" IS THE SEVEN LAYER UNDER THE EARTH SURFACE AND MAY BE UNDER THE "HELL" IS UNDER THE "THARA".

THE THRONE OF ALLAH:

THE THRONE OF ALLAH IS ABOVE THE SEVENTH SKY, IF SOMEONE ASKED IF EVERY STAR IN THE SKY IS A SOLAR SYSTEM³, AND IN EVERY SOLAR SYSTEMN THERE IS A PLANET IT'S NAME EARTH AND SEVEN SKIES ASSOCIATED WITH IT , AND THERE IS A THRONE OF ALLAH ABOVE THE SEVENTH SKY ASSOCIATED WITH THAT PLANET EARTH , AND THERE ARE MORE THAN 100 *10⁹ GALAXIES IN THE

UNIVERSE , AND IN EVERY GALAXY THERE ARE ABOUT 100 *10^9 SOLAR SYSTEMS , AND IN EVERY SOLAR SYSTEM A PLANET IT'S NAME "EARTH" SUITABLE FOR LIFE AND SEVEN SKIES ASSOCIATED WITH IT , SO HOW ALLAH IS ONE, THE ANSWER IS THAT MAY BE ALL THESE THRONES REPRESENTS A ONE THRONE , OR THERE ARE MANY THRONES, BUT THE FACT THAT IS : IF THE THRONE IS ONE ((ALL THRONES IN THE UNIVERSE REPRESENTS ONE THRONE)) OR INSPITE OF MANY THRONES ; THE GOD "ALLAH" IS ONE .

RESULTS: THE THRONE OF ALLAH MAY BE REPRESENTS ALL THRONES IN THE UNIVERSE , OR THERE ARE MANY THRONES BUT ALLAH IS ONE IN SPITE OF THAT THERE ARE MANY THRONES, MEANS IN SPITE OF THE MULTIPLICITY OF THE THRONES.

AND THE UNIVERSE IS BIGGER THAN THE SEVEN SKIES AND THE EARTH BY BILLIONS BILLIONS BILLIONS TIMES.

PART 3

THE PARADISE: IS IN THE SKY,

**FINDING THE SPEED OF THE DOOR OF THE JANNA-THE
PARADISE- PARADISE:
IT IS OPPOSITE TO THE KA'BA**

**IT IS REVOLVING AROUND THE EARTH SO AS TO BE
OPPOSITE TO THE KA'BA IN MACCA ALLTIMES.**

**THE DISTASNCE OF THE DOOR OF THE PARADISE FROM
EARTH =D1,**

D2= THE DISTANCE OF THE MOON FROM THE EARTH,

SO:

$$D1=(1/3) *D2 \dots\dots\dots EQ.(1)$$

$$D2=(1.3) C \dots\dots\dots EQ.(2)$$

WHERE C : IS THE SPEED OF LIGHT IN VACUUM

$$C=2.99792458*10^8 \text{ METERS/SECOND.}$$

SO: PUTTING EQ.(2) INTO EQ.(1) YIELDS:

$$\begin{aligned}
 D1 &= (1/3) * (1.3 C) \\
 &= 129910065 \text{ METERS} \\
 &= 129910.065 \text{ KM}
 \end{aligned}$$

FROM EARTH.

WE SEE THAT THE DISTANCE OF THE DOOR OF THE PARADISE IS MORE LITTLE THAN THE 10 TIMES OF THE EARTH'S DIAMETER, BUT THE DISTANCE OF THE MOON FROM EARTH IS ABOUT 10 TIMES THE EARTH'S CIRCUMESTANCE.

$$D1 = (1/\pi) D2$$

THE ANGULAR VELOCITY OF THE DDOR OF THE PARADISE AROUND EARTH PLANET = ω = 1 ROTATION/DAY.

V= THE LINEAR VELOCITY OF THE DOOR OF THE PARADISE,

R=DISTANCE OF THE THAT DOOR FROM THE CENTER OF THE VEARTH = (D1+RADIUS OF THE EARTH)

:

$$R = D1 + r \dots\dots\dots \text{EQ.(3)}$$

$$r = \text{EARTH'S DIAMETER}/2 = 12756.32/2 = 6378.16 \text{ KM};$$

$$\begin{aligned}
 R &= 129910.65 + 6378.16 \\
 &= 136288.81 \text{ KM}
 \end{aligned}$$

$$V = \omega R \dots\dots\dots\text{EQ.(4)}$$

$$\text{SO : } V = (2\text{Pi}/(24*3600)) * (136288.81)$$

$$= 9.911 \text{ KM/S}$$

SO:

$$V = (9.911/(2.99792458*10^5)) \text{ C}$$

$$V = (3.3059537475088849633435408171609 * 10^{-5})$$

$$\text{C} \dots\dots\dots\text{EQ.(5)}$$

PART 4:

THE HOLY VALLY (TEWA) :

THE HOLY VALLY IS IN IL KADEMIEA, BAGHDAD .NEAR THE SHRINE OF IL IMAM MOSA IL KADEM (PEACE ON HIM),

TODAY ITS (THE HOLY VALLY) IS A Garage.

IT BEGEN FROM THE (OROBA SQUARE) EXTENDED TO THE IMAM MOSA SHRINE.

ALLAH MAKE A CONDITION ON THE PROPHET MOSA , ((THAT YOU MUST VISIT THIS HILL (MOUND) OF EARTH , ITS (-THE HILL-) WILL BE A Grave FOR IMAM MA'SOOM (-DO NO MISTAKES-) FROM IL (FAMILIY) OF PROPHET Mohammad AND HIS NAME IS MOSA. AND I WILL ACCEPT TO TALK TO YOU.)).



PROPHET MOSA STAND IN THE HOLY VALLY (WHICH IS TODAY A Garage)IN THE WEST SOUTH OF THE VALLY).

THE SOLE MUST TAKEN OFF FROM THE OROBA SQUARE ALLAH SAID TO PROPHET MOSA :((TAKE OFF YOUR SOLE . YOU ARE IN THE HOLY VALLY TEWA)).

IMAM MOSA IL KADEM SHRINE HAS 8 DOORS.

PART 5:

**WHERE IS THE BIG SHIP OF THE PROPHET NOOH HAS
BEEN MOOR .**

(THE MEANING OF THE SAFIENA IS THE BIG SHIP)

**IT MOORED ON A SIDE OF A MOUNTAIN IN THE NOTHERN
OF iraq (MOUSEL PROVINCE). IT IS STILL THERE. ITS
COLOR IS BLACK.**

PART 6:

**THE POSITION THAT THE PROPHET ADAM LANDED ON IT
ON THE EARTH FROM THE JANNA ((FROM PARADISE))**

IT IS : THE ADAM'S PEAK MOUNTAIN IS ((SRI LANKA))



**THE ADAM'S PEAK MOUNTAIN , IN SIRIBADA TEMBEL AND
NAMED Sabaragamuwa MOUNTAIN ALSO**

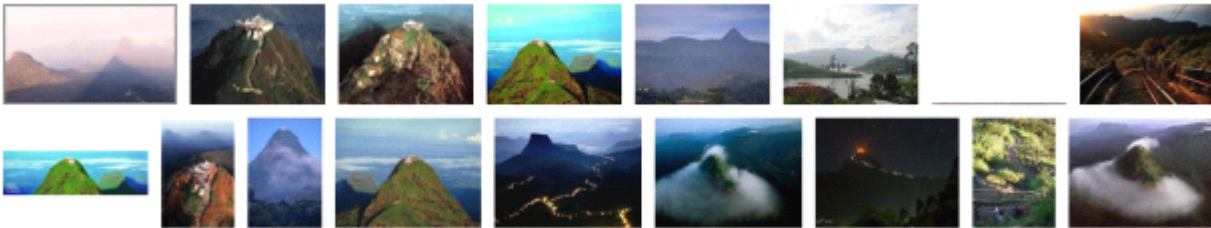


ADAM'S FOOT PLACE

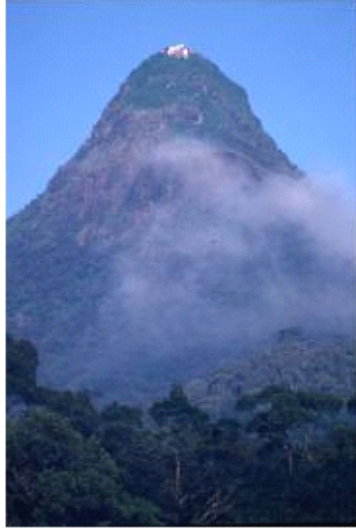


ADAM'S PEAK MOUNTAIN

AND THESE MORE PICTURES:



**ADAM'S PEAK PICTURES , IT'S LOCATED IN Sabaragamuwa
Province IN SRI LANKA**



**ADAM'S PEAK MOUNTAIN IN SRIPADA ,
IT'S HIGHT 2243 METERS**



[AdamsFootPrint.jpg](#)

[sripada.org](#)

FIRST FOOT - 262 × 269

MARK ON EARTH OF

مماثلة مزيد من الأحجام

**ADAM'S FOOT PRINT ((PEACE ON HIM)) IN SRIPADA ON THE
ADAM'S PEAK MOUNTAIN**



ADAM'S PEAK ON THE MAP



SRI LANKA, SABARAGAMUWA

**AND THERE ARE MANY EXULARY HOTLES IN
SABARAGMUMA**

THE SRI LANKA PROVINCES : THEY ARE 9 , AND THEY ARE :

1-CENTRAL PROVINCE

KANDY DISTRICT

MATALE DISTRICT

NUWARA ELIYA DISTRICT

2- Eastern Province

Ampara District

Batticaloa District

Trincomalee District

3-North Central Province

Anuradhapura District

Polonnaruwa District

4- Northern Province

Jaffna District

Kilinochchi District

Mannar District

Mullaitivu District

Vavuniya District

5- North Western Province

Kurunegala District

Puttalam District

6- SABARAGAMUWA PROVINCE : WHICH CONTAINS

THE ADAM'S PEAK MOUNTAIN.

PROPHET ADAM PEACE ON HIM.

Kegalle District

Ratnapura District

7- Southern Province

Galle District

Hambantota District

Matara District

8- Uva Province

Badulla District

Moneragala District

9- Western Province

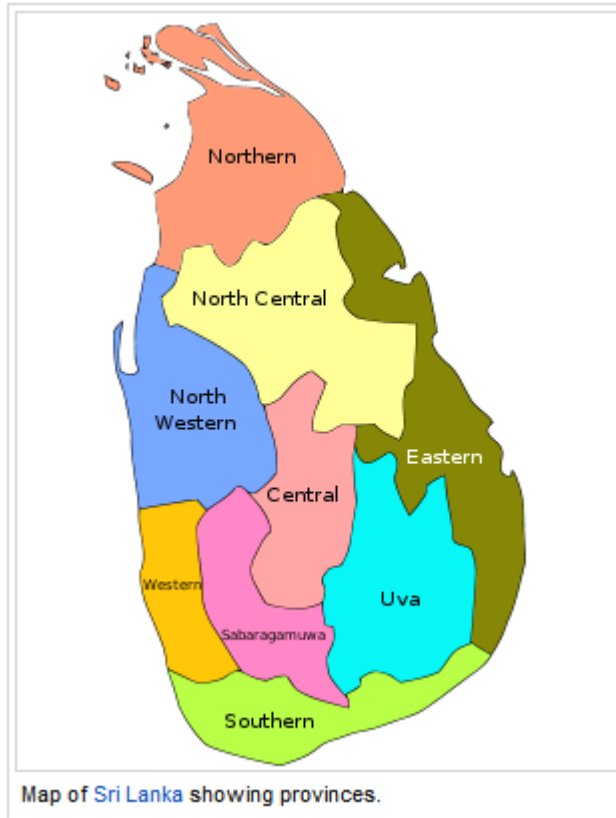
Colombo District

Gampaha District

Kalutara District



**WE SEE THAT THE MOUNTAINS CONCENTRATED IN THE
CENTER OF AREA OF THE SRILANKA**



WHERE ADAM HAD DIED , IT SAID THAT HE DIED IN THE SAME PLACE THAT HE LANDED ON IT FROM THE JANNA-THE PARADISE- AND IT SADID THAT HE DOMED IN THE MOSQUE OF AL ((KAIF)), AND THE ((VISIT)) OF AL ((IMAM ALI SON OF ABI TALIB SONOF ABDELMUTTALIB)) THAT HE-ADAM- AND NOH ARE DOMED IN THE GRAVE OF AL IMAM ALI IN THE ((NAJAF)) AL ((KUFA)).

NOTE: THE SRI LANK IS THE COUNTRY OF TEA , AND IT HAVE ANOTHER NAME WAS NAMED BY IT ((CEYLON)).

PART 7:

**THE GREEN ISLAND OF THE IL IMAM AL MAHDI IS
LOCATED NEAR OR IN THE BERMUDA TRIANGLE.READ
((THE GREENISLAND)) BOOK FOR THE SAME AUTHOR OF
THIS BOOK.**

NOTE: THE SHEI'A ISLAND IS IN THE ATLANTIC OCEAN.

PART 8:

THE ENTRANCE OF IL IMAM ALMAHDI TO THE IRAQ

THE IMAM MAHDI WILL ENTER IRAQ FROM THE DESERT OF THE SEMAWA ,THEN MAKE THE FOOTBALL OF AL KADISIEA AS A MILITARY REGION.



**IL IMAM IL MAHDI ROAD ,HEJAS,SEMAWA,
IL QADESIEA, IL KUFA , THEN SYRIA ,
PALESTINE.**

**MAKKA, MADINA,SEMAWA, IL QADESIEA, IL KUFA ,
THEN SYRIA, PALESTINE.**

THEN COSTANTEINIEA.

PART 9:

ASHAB AL KAHF : ((THOSE WHOM SLEPT IN THE CAVE FOR 300 SOLAR YEARS , 309 LUNAR YEARS))

THE NAME OF THE CAVE: ((THE WASEID)) : ALWASEID

ALLAH SAID IN KOR'AN : ((AND THEIR DOG SPREAD IT'S HANDS IN THE ((WASEID)))).

THE NAME OF THE MOUNTAIN : NAJLOOS,

THE STATE OF THE ((ASHAB AL KAHF : THOSE WHOM SLEPT IN THE CAVE)) : THEY ARE A LIVE.

THE SATE OF THE DOOR OF THE CAVE : DISAPPEAR.

THE NAME OF VILLAGE THAT THEY RUN AWAY FROM IT : EPHESUS ,

AND IT NAMED IN ISLAM ((TARTUS)).

STATE: TURKY.



THE MAP SHOW THE LOCATION OF THE EPHEBUS

AND THE HOLE OF THE CAVE IN THE DIRECTION TO THE NORTH, SO THE SUN WHEN RISE WILL BE TO THEIR RIGHT SIDE , BECASUE THEY ARE SLEEP AND THEIR HEADS TO THE SOUTH AND THEIR LEGS TO THE NORTH -TO THE DOOR OF THE CAVE-, SO SUN WHEN DAWN WILL BE TO LEFT SIDE. ALLAH SAID : ((AND YOU SEE THE SUN WHEN IT RISES DEVIATES FROM THAT OF RIGHT , AND WHEN IT DAWN GIVE THEIR A LIGHT FROM THAT OF LEFT, AND THEY IN A "(HOLE))" OF IT. THAT IS FROM THE STRONG PROOFS OF ALLAH. WHO DIRECTED BY ALLAH THEN HE IS THE DIRECTED, AND WHO ALLAH PUT ON HIM THE DEVIATION -FROM THE WAY OF TRUTH- SO YOU WILL NOT FINED TO HIM WHO CARE DIRECTOR)).

AND THIS MAKE THE SUN SEE THEM TWISE IN A DAY , AT THE MORRING- SUN RISE- AND AT THE DAWN-SUN SET, BECAUSE THE DOOR OF THE CAVE -THE DIRECTION OF

THE CAVE WHICH IS A HOLE IN THE MOUNTAIN OR A HOLE IN THE SAME CAVE- DIRECTION IS TO THE NORTH. SO THE SUN WILL NOT RISE ON THEM AT THE HOT TIMES LIKE AFTERNOON, -BECAUSE IT'S DIRECTION IS TO NORTH- AND THIS IS A PROOF THAT THE CAVE IS NOT IN (AMMAN), BECASUSE IT'S DIRECTION IS TO THE SOUTH , AND BEFORE THAT IT COINTAINS GRAVES, AND ((ASHAB AL KAHF)) THOSE WHOM SLEPT FOR 300 SOLAR YEARS, 309 LUNAR YEARS ARE A LIVE NOT DEAD PERSONS AND THEIR DOG.

NOTE: THE DIRECTION OF THE CAVE -IT'S DOOR DIRECTION- IS TO THE NORTH BECASUE TURKEY-THE COUNTRY THAT THE CAVE IN IT- FROM THE STATES THAT LAYING TO THE NORTH OF EQUATERIAL LINE NOT TO IT'S SOUTH.

EPHESUS IS ABOUT 73 KM FROM THE FAMOUS TURKEY TOWN (IZMIR).

THE DISTANCE -TAKEN FROM ASTORY BELONGS TO IMAM ALI- THAT THEY ROVER IN THEIR RUNNING AWAY FROM THE EPHESUS: I.E. THE POSITION OF THE NAJLOOS MOUNTAIN :

D= 8 PARSECS

=8 * 3,860888889

=30.88711111 KM

= 30 KM , 887 M, 11.1112 CM FROM EPHESUS

**SO THE CAVE IS NOT AT 1KM FROM THE CITY EPHESUS
BUT 30 KM, 887 M, AND 11.1112 CM**

**THE NAME THE KING THAT THEY RUINED AWAY FROM
HIM :DEKIANUS, AND HE WAS FROM THE KING OF PARS -
PERSIAN-, AND HE WAS SAY THAT HE IS A GOD , SO HE
WAS A CARZY.**

THEIR NAMES :

1-TAMLEIKA SON OF FELSEIN ,

2-MAXLMEINA,

3-MAHSALMENA,

4-MARTLEIOUS,

5-KASHTOOS,

6-SADENIOUS,

7- THE SHEPHERD,

8- THE DOG OF THE SHEPHERD

**THEY -THE 6 YOUNGS- MET THE SHEPHERD AFTERR THAT
THERY END THEIR RUN AWAY DISTANCE , HE DIRECTED
THEM TO THE CAVE AT THAT DISTANCE FROM EPHESUS.**

SO THEIR NO. IS = 7 AND THE 8TH OF THEM IS THEIR DOG.

THE NAME OF THEIR DOG : KITMEIR.

**THE RUN AWAY DISTANCE = 1 MILE + 7 PARSECS = 8
PARSECS**

**THIS DISTANCE HAD TAKEN BY ME FROM THE BOOK: ASK
ME BEFORE YOU LOSE ME , FOR HIS AUTHOR :I
MOHAMMAD REDA AL HAKEIMY.**

**THE SLEEPING TIME WAS = 300 SOLAR YEARS = 309 LUNAR
YEARS**

TIME IN LUNAR = (1.03) * (TIME IN SOLAR)

TIME IS SOLAR= (1/1.03) * (TIME IN LUNAR)



**THE EPHESUS-OLD- OR (EFES) IN TURKEY
AND THE EPHESUS IS NEAR TO SELCUK**



**THE MAP EXPLAIN THE LOCATION OF SELCUK RESPECT
TO IZMIR , SELCUL IS TO THE SOUTH EAST FROM
IZMIR ,THE ARRAW IS FROM IZMIR TO SELCUK.**

**THE EPHESUS IS ANCEINT AND CAN NOT BE SEEN BY
STALLITE IMAGE UNLESS BE CLOSE TO IT MORE AND
MORE.**



THE MAP AS CLOSE OF SELÇUK



**A PART OF EPHEBUS ; IT MAY BE A PART OF THE KINGDOM
CASTLE**



**WE SEE THAT THE EPHESUS IS ABOUT THE
MEDITERRANEAN BY DISTANCE DO NOT MORE THAN 15
KM.**

THE POSITION OF EPHESUS IN COORDINATES IS:

**37.9397°NORTH , 27.3408°E AST = 37.9397 NORTH , 27.3408
EAST**

**EPHESUS ((OR TARTUS)) TODAY IS BELONGS TO KUSADASI
IN TURKEY.**

**AND FROM THE 4000 CYLINDERS OF GOLD , DID NOT
REMAINS JUST A FEW CYLINDERS WHICH WAS BELONG
TO THE CASTLE OF DEKIANUS.**



A CYLINDER IN EPHESUS



THE OLD EPHESUS



DAGDERE VILLAGE IT IS ABOUT 30 KM FROM EPHESUS.

**THEY RAN AWAY FROM DEKIANUS : BECAUSE THEM -
THE 6 YOUNGS- REFUSED TO WORSHIP HIM, THEY
WANTED TO WORSHIP ALLAH. SO THEY LEAVED THAT
CITY EPHESUS AND RAN AWAY.**

**WHY ALLAH BROUGHT THEM TO LIFE : TO MAKE
QUESTION AMONG THEM: HOW MANY OF YOU HAD STAYED
THEY SAID : WE STAYED A DAY OR A PART OF A DAY.**

PART 10:

**THE EARTH OF JUDGMENT IS IN BAGHDAD, ALJADRIEA,
AT THE UNIVERSITY OF BAGHDAD CAMPUS.**



MAP OF BAGHDAD , IRAQ.

BAGHDAD SPECIALIZED BY THAT IT CONTAINING :

**1- THE HOLY GRAVES OF THE 4 REPRESENTATIVES MEN
OF THE IL IMAM AL MAHDI,**

2- THE HOLY VALLY IN THE KADEMIEA,

AND

**3- THE HOLY GRAVES OF IMAMS MOSA AL KADEM AND
MOHAMMAD AL JAWAD.**

PART 11:

THEO AL KARNAEIN TAVEL

THE PAIRED WOUND MAN

HE NAMED ((THEO AL KARNAIEN: THE MAN WHO HAVE PAIRED WOUND)) BECASUSE HE HITTED ON HIS HEAD A TWISE SO HE NAMED BY THAT NAME.

THE TRAVEL OF PAIRED WOUND MAN IS FROM EAST TO WEST UNTIL HE REACHED THE EAST OF THE EARTH BECASUSE THE EARTH IS A GLOBE.

ALLAH SAID IN KOR'AN : ((

HE FOLLOWED A REASEN FOR GETTING UNTIL HE REACHED THE PLACE THAT THE SUN STTING IN HE FOUND IT SETTING IN A HOT SOURCE AND FOUND AT IT PEOPLE.... .

THEN HE FOLLOWED A REASEN FOR GETTING UNTIL HE PASSED THE PLACE THAT THE SUN RAISING FROM IT, HE FOUND IT RAISING ON A PEOPLE THAT THE ALLAH DID NOT MADE TO THEM FROM IT A COVER.

**THEN HE FOLLOWED A REASEN FOR GETTING
UNTIL HE PASSED THE REGION THAT IT BETWEEN THE
TWO DAMS HE FOUND IN THE LOW AREA THIS RESPECT
TO THEM A PEOPLE CAN NOT UNDERSTANDE A SPEECH**

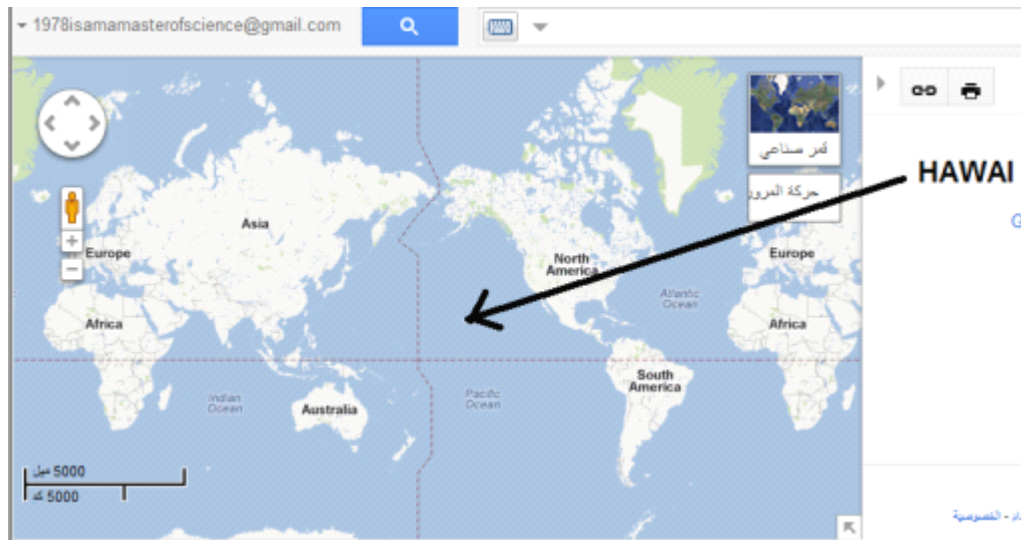
**THEY SAID : HI AMAN WITH PAIRED WOUND , THE YA"JOJ
AND MA"JOJ ARE CORRUPTING THE EARTH , DID YOU
WANT TO PUT TO YOU AN OUT OF MONEY ON THAT YOU
MAKE BETWEEN US AND THEM A DAM.))**

**WE SEE THAT THERE ARE THREE ((THEN HE FOLLOWED A
RESEN FOR GETTING)), ONE IN THE DIRECTION TO THE
WEST , AND TWO IN EAST.**

HOT SOURCE : IT'S A VOLCANUE IN HAWAI.



THE HOT SOURCE IN HAWAI



THE POSITION OF HAWAI IN THE PACIFIC OCIAN

AND THIS A PROOF OF DISCOVERING AMERICA BEFORE CHRISTOF COLOMBOS

THEO AL KARNAIN ((THE MAN OF PAIRED WOUND)) TRAVELED BY SEA ((THEN HE FOLLOWED A REASEN FOR GETTING)) FROM THE HOT SOURCE (IN AMERICA , HAWAI WERE THERE PEOPLE TODAY IS 183 000)) TO THE PLACE OF RAISING OF THE SUN WHICH IS LOCALIZED IN THE EAST OF CHINA ((HE FOUND IT RAISING ON PEOPLE THATTHEY DO NOT HAVE FROM IT A COVER)). -MAY BE IT'S CLEAR THAT THERE ARE NO MOUNTAINS IN THAT PLACE , IF THERE ARE MOUNTAINS SO THERE IS A COVER OF THEY FROM THE SUN , BUT THERE IS NO COVER; NO MOUNTAINS-. FROM MY SEARCH ON THE GOOGLE MAP SAKHALIN ISLAND OR THE EAST COAST OF JAPAN.

((THEN HE FOLLOWED A RESEAN FOR GETTING)) UNTIL HE REACHED A PEOPLE THEY ARE THE NIEGHBORS OF THE YA"JOJ AND MA"JOJ AND THEY ASKED HIM TO BUILD A DAM FOR THEM. AND THIS REGION ACCORDING TO THE MAP OF THE IDREISY ALAWAY IT IS THE NORTH EAST OF ASIA ((AT THE SOUTH EAST OF RUSSIA TODAY)).



**YA"JOJ
AND
MA"JOJ
AREA**

THE MAP OF THE IDREISY AL ALAWAY



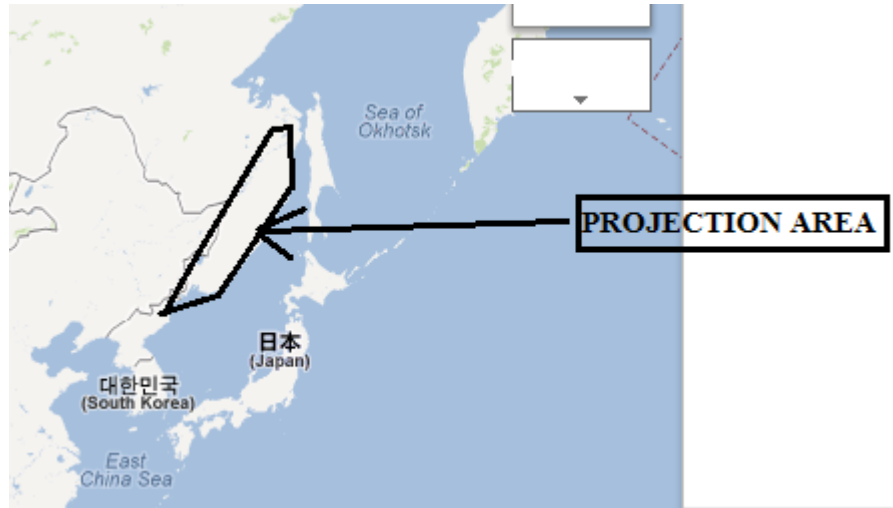
YA"JOJ AND MA"JOJ REGION

NOTE: WE SEE FROM THE ABOVE IMAGE THAT THE YA"JOJ AND MA"JOJ REGION CONTAINING DELTA RIVER.

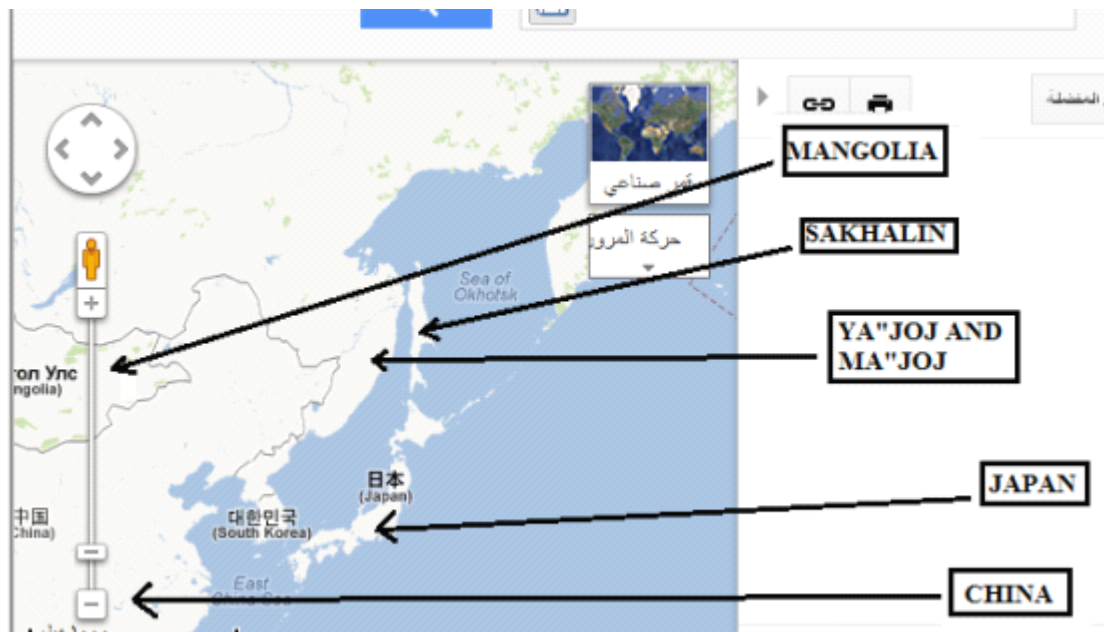
THE PROJECTION ARE TO THE NEW WORLD MAP CONTAINING ALSO A DELTA BUT TO THE NORTH AND DO NOT CONTINEOUS TO THE SEA..

THE IDREISY AL ALAWAY HAD NEGLECTE THE AREA FROM THE NORJ TO NORTH EAST OF THE CHINA , -THE RUSSIA- EXCEPT THE ((YA"JOJ AND MA"JOJ)) REGION. AND GAVE A BIGGER THAT IT'S REALTY TO AFRICA, THIS MAY BE BECAUSE OF THAT HE NOT TRAVELED IN THAT COLD AREA- RUSSIA EXCEPT THE YA"JOJ AND MA"JOJ REGION- AND TRAVELED MUCH IN AFRICA THIS IS BECAUSE OF THAT THE FORMER IS VERY COLD AND THE LATTER IS HOT, HE REFERED HOT ON COLDNESS.

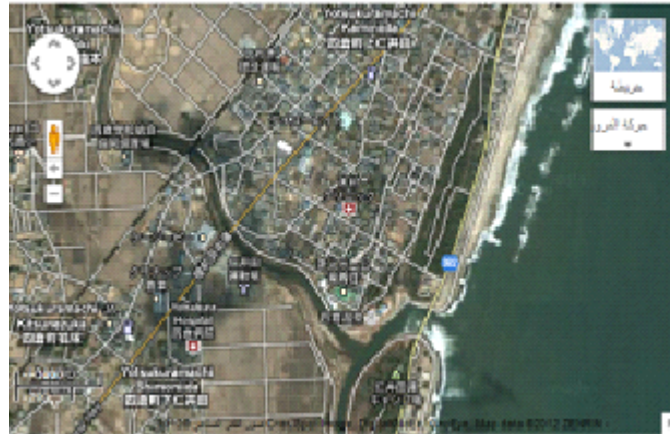
RESEARCH PROCESS: THE PROJECTION OF THE ((YA"JOJ AND MA"JOJ)) AREA FROM THE IDREISY MAP TO THE MAP OF THE WORLD NOT GIVES THE REGION THAT IT TO THE WEST OF SAKHALIN ISLAND -BELONGS TO RUSSIA-., AND FROM THE SOUTH IS THE SEMI ISLAND OF KOREA.



THE PROJECTION AREA FROM THE MAP OF THE IDREISY TO THE WORLD MAP : GIVES THE YA"JOJ AND MA"JOJ AREA.



THE MAP SHOWING THE YA"JOJ AND MA"JOJ AREA



**A PICTURE OF THE EAST JAPAN COST
BY THE SATELLITE**

PART 12:

**THE HELL IS IN EARTH. AND IT'S DOOR TO THE WORLD IS
IN YEMEN, BARHOOT VALLY.**

بِسْمِ اللَّهِ الرَّحْمَنِ الرَّحِيمِ

**THE AUTHOR OF THE BOOK : MASTER OF SCIENCE IN
PHYSICS FROM THE UNIVERSITY OF BAGHDAD,
DEPARTMENT OF PHYSICS, COLLEGE OF SCIENCE,
ALJADRIEA CAMPUS, BAGHDAD, IRAQ. :**

OSAMA KHALEIL ONAIED.

EMAIL:

OSAMA1978ATCBDATE@gmail.com

TELEPHONE: 009647810285448



THE AUTHOR'S PICTURE

**HOUSE ADDRESS: IRAQ,SEMAWA, OM ILISAFEIR,
(RAWDAT=CHILDREN HOUSE) ILABEIR STREET, NEAR THE
ELECTRICITY GENERATOR, HOUSE NUMBER=5, DOOR IN
SERIES FROM SOUTH TO THE NORTH=8.**

POST: IRAQ, SEMAWA POST OFFICE, BOX:230.

**DEGREE: MASTER OF SCIENCE IN PHYSICS, FROM THE
UNIVERSITY OF BAGHDAD, COLLEGE OF SCIENCE
(MIXED), DEPRATMENT OF PHYSICS, THE JADRIEA
CAMPUS, THE SEMIISLAND REGION IN BAGHDAD (EAST
THE TIGRIS), BAGHDAD, IRAQ, ARAB HOMELAND.**

DATE: THIS YEAR IS

2013 SUNNY AFTER THE TRUE CHRIST BIRTH

2075 MOONIC AFTER THE TRUE JESUS BIRTH

**1391 SUNNY AFTER THE MIGRATION OF THE
PROPHET MOHAMMAD FROM MAKKA TO THE
MADINA**

**1434 MOONIC AFTER THE PROPHET MOHAMMAD
MIGRATION,**

**(1178) MOONIC AFTER THE TRUE IMAM MAHDI
BIRTH IN THE ASKAR (SAMARRA').**

**(1142) SUNNY AFTER THE TRUE IMAM THE MAHDI
BIRTH IN THE ASKAR**

**(1441 SUNNY) AFTER THE BIRTH OF THE PROPHET
MOHAMMAD**

**(1486 MOONIC) AFTER THE BIRTH OF THE PROPHET
MOHAMMAD**

(1458 MOONIC) AFTER THE BIRTH OF THE IMAM ALI

(1414 SUNNY) AFTER THE BIRTH OF THE IMAM ALI

THE AUTHOR'S WEBSITES ARE :

[HTTP://OSAMAKHALEILNAIED.WEBS.com,](http://OSAMAKHALEILNAIED.WEBS.com)

[HTTP://OSAMAKHALEILENAIED.WEBS.com,](http://OSAMAKHALEILENAIED.WEBS.com)

[HTTP://ISLAMANDPHYSICS.WEBS.com,](http://ISLAMANDPHYSICS.WEBS.com)

AND

[HTTP://DOCTORALBERTEINSTEIN.WEBS.com](http://DOCTORALBERTEINSTEIN.WEBS.com)

FACEBOOK: OSAMA KHALEIL ONAIED