

THE CONTENTS

| PART NO. | SUBJECT | PAGE. |
|-----------------|----------------------------------------------------------------------------------|--------------|
| | | |
| | ABSTRACT | 3 |
| | KEYWORDS | 4 |
| 1 | THE IMPORTANCE OF THE TIME | 5 |
| 2 | THE IMPORTANCE OF THE PHYSICS AND ASTRONOMY | 6 |
| 3 | METHODS "KINDS" OF TRANSFORMATION "MEDIA" OF THE INFORMATION..... | 7 |
| 4 | KINDS OF RELATIVITY | 19 |

| PART NO. | SUBJECT | PAGE. |
|-----------------|----------------------------------------------------------------------------|--------------|
| | | |
| 5 | KINDS OF TIME | 21 |
| 6 | SOME KINDS OF TIME..... | 23 |
| 7 | THE IMAM THE MAHDI'S TIME..... | 26 |
| 8 | EINSTEIN'S TIME ((THE LIGHT TIME)) THE E.M. WAVES TIME..... | 27 |
| 9 | THE DIRECTIONS OF TIME..... | 28 |
| 10 | THE FIGURE OF TIME..... | 29 |
| 11 | TIME MESURING TOOL..... | 31 |
| 12 | TIME PARTS..... | 32 |
| 13 | THE MOONIC AND SUNNIC YEARS..... | 42 |
| 14 | THE STOPPING OF TIME..... | 43 |
| 15 | USING TIME TO REPRESENTS DISTANCES..... | 45 |

ABSTRACT : IN THIS BOOK WE EXPLAINED THE IMPORTANCE OF THE TIME, THE IMPORTANCE OF THE PHYSICS AND ASTRONOMY, METHODS "KINDS" OF TRANSFORMATION "MEDIA" OF THE INFORMATION, KINDS OF RELATIVITY, KINDS OF TIME, SOME KINDS OF TIME, THE IMAM THE MAHDI'S TIME, EINSTEIN'S TIME ((THE LIGHT'S TIME)) THE E.M. WAVES TIME, THE DIRECTIONS OF TIME, THE FIGURE OF TIME, TIME MESURING TOOL, TIME PARTS, THE MOONIC AND SUNNIC YEARS, THE STOPPING OF TIME, AND USING TIME TO REPRESENTS DISTANCES.

THE KEYWORDS: TIME, RELATIVITY.

PART 1:

THE IMPORTANCE OF THE TIME

TIME IS THE FOURTH DIMENSION, AFTER THE X,Y, ANDE Z.

THERE ARE 12 DIMENSIONS, MAY BE THERE ARE MORE THAN 12 DIMENSIOMS IN NATURE.

WE WILL TALK ABOUT TIME; THE FOURTH DIMENSION.

WHO UNDERSTAND THE FOURTH DIMENSION ((THE TIME)), UNDERSTANDS THE RELATIVITY, WHO UNDERSTANDS RELATIVITY; UNDERSTANDS THE PHYSICS, WHO UNDRESTANDS THE PHYSICS & ASTRONOMY UNDERSTAND THE ORIOGION OF THE RELEGION.

WHO DOES NOT UNDERSTAND THE FOURTH DIMENSION ((THE TIME)), DOES NOT UNDESTAND RELATIVITY, WHO DOES NOT UNDERSTAND RELATIVITY DOES NOT UNDERSTASND THE PHYSICS& ASTRONOMY, WHO DOES NOT UNDERSTAND THE PHYSICS & ASTRONOMY DOES NOT UNDERSTAND THE ORIOGION OF THE RELEGION ((THE LAHOOT)).

PART 2

THE IMPORTANCE OF THE PHYSICS AND ASTRONOMY

AS WE TOLD IN THE PART 1, THE TOP, ADVANCED AND LATEST THEORY THE HUMEN BEINGS EXCEPT THE PEOPLE OF THE IMAM THE MAHDI ((THE GREEN ISLAND PEOPLE)) WHICH IT LOCATED NEAR OR IN THE BERMUDA TRIANGLE IS THE RELATIVITY SPECIALLY THE RELATIVITY OF LIGHT ((THE RELATIVITY OF ALBERET EINSTEN)).

THE SCIENCE THAT THE IMAM THE MAHDI WILL APPEAR TO THE PEOPLE AFTER HIS APPEARENCE IS ((25/2)) OF THE SCIENCE THAT THE HUMEN BEINGS REACHED AT THE DATE OF HIS APPEARENCE.

HIS PEOPLE MADE THE FD:FLYING DISKS OR AS I NAMED ((THE DYFINED FLYING DISKS)) THE DFD. HIS PEOPLE SCIENCE IS MORE MORE MORE MORE ADVANCED FROM THE TOP THEORY ; THE RELATIVITY OF LIGHT.

PART 3

METHODS "KINDS" OF TRANSFORMATION "MEDIA" OF THE INFORMATION

**THE MULTIPLYING METHODS IS ABOUT THE MULTIPLYING
THE MEDIA THAT CAN BE USED TO TRANSFORM THE
INFORMATION , THE INFORMATION IS WHAT HAPPENED
AT SOME TIME, THE EVENT.**

THEY ARE :

- 1- THE SWIMMER,**
- 2- WALKING MAN ((OR WOMAN)),**
- 3- RUNNING MAN ((OR WOMAN)),**
- 4- SEA SHIP,**
- 5- THE GRAY MARE, THE HORSE,**
- 6-CAR,**
- 7-TRAIN,**
- 8- AIRPLANE ((200METERS/SECOND)),**
- 9- THE CONCORD ((800 METERS/SECOND)),**
- 10- A "DOVE" BIRD ((WHICH A BOUNDED MESSAGE TO IT'S
FOOT)),**
- 11- THE SPACE SHUTTLE ((5250 METERS/SECOND)),**
- 12- THE SOUND WAVE ((VOICE)) ((325 METERS/SECOND)),**
- 13- SPACE SHIP,**
- 14- THE DFD : THE FD :FLYING DISKS,**
- 15- THE ANGLES,**

16- THE SPIRIT

**17- THE LIGHT WAVE ((THE ELECTROMAGNETIC WAVE))
((2.99792458 *10^8 METERS/SECOND)),**

**NOTE: THE ART. SATELLITES USE THE E.M. WAVES SO
((LIGHT'S TIME)),**

18- NO TIME REQUIRED METHOD.

-
-
-

**SO THERE ARE MORE THAN 18 METHODS ((KINDS)) TO
TRANSFORM THE INFORMATION, TO INFORM SOME ONE
WHAT HAPPENED , I.E. TO TELL HIM THE EVENT.**

NOTES:

((1))

**THE RELATIVITY WAS DISCOVERED BY THE SWIMMER [1],
ALBERT EINSTEIN USED THE LIGHT INSTEAD OF THE
SWIMMER, SO THE THEORY OF RELATIVITY OF LIGHT
((THE THEORY OF RELATIVITY OF ALBERT EINSTEIN))
HAD CAME.**

THE SPECIAL RELATIVITY EQUATIONS:

(1) THE TIME

T=T0 [1-V^2/VK^2]^0.5EQ.(1) TIME

T= TIME OF THE SPEED V

T0 =TIME OF SPEED 0= REST TIME

V= THE SPEED,

VK= THE KIND OF TRANSFORM OF INFORMATIONS SPEED

**(2) THE LENGTH : THE LENGTH OF A BODY ((SOMETHING))
IN IT'S DIRECTION OF MOVING WITH SPEED (V):**

$L=L_0 [1-V^2/VK^2]^{0.5}$ EQ.(1) LENGTH

L= LENGTH OF THE SPEED V

L0 = THE LENGTH OF SPEED 0= REST LENGTH

V= THE SPEED,

VK= THE KIND OF TRANSFORM OF INFORMATIONS SPEED

(3) THE MASS :

$M=M_0/ [1-V^2/VK^2]^{0.5}$ EQ.(1) MASS

M= MASS AT THE SPEED ((V))

M0 =MASS AT SPEED 0= REST MASS

V= THE SPEED,

VK= THE KIND OF TRANSFORM OF INFORMATIONS SPEED

**((2)) FOR THE LIGHT WAVE ((THE ELECTROMAGNETIC
WAVE)) THE VK=C, C= THE SPEED OF LIGHT IN VACUUM
=2.99792458 *10⁸ METERS/SECOND)).**

**VK FOR SOUND = 325 M/S, VK FOR BULLET=500 M/S,
VK FOR RUNER= LIKE 10 METERS/SECOND, ETC.**

**((3)) THE RELATIVITY IS NOT ONLY FOR LIGHT ((THE E.M.
WAVES)):**

**FOR EVERY KIND OF TRNASFORMATION OF
INFORMATION , THERE IS A RELATIVITY OF THAT KIND,
THERE ARE MORE THAN 18 KINDS OF RELATIVITY.**

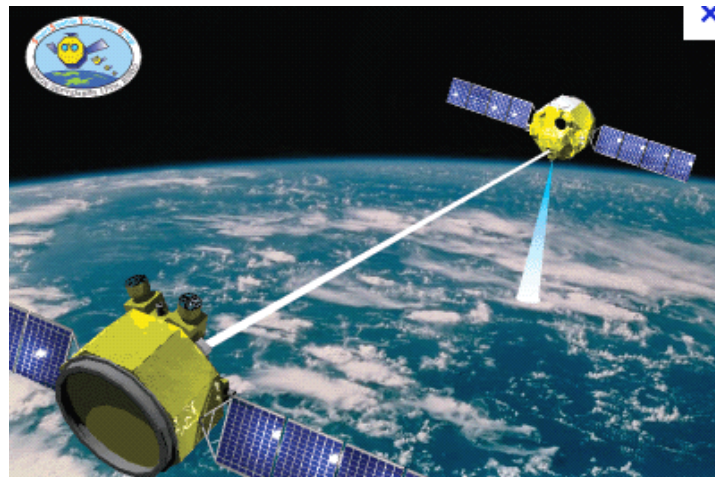
**I.E. FOR EVERY TRANSDFORMATION OF INFORMATION
METHOD SPEED THERE IS A RELATIVITY.**



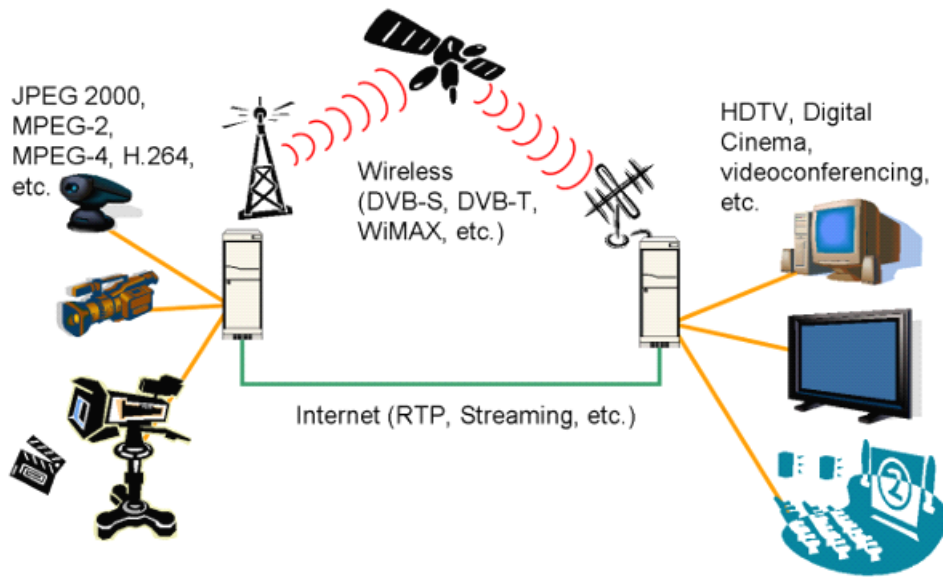
**A MESSAGE CAN BE BOUNDED TO
THE DOVE'S LEG [2]**



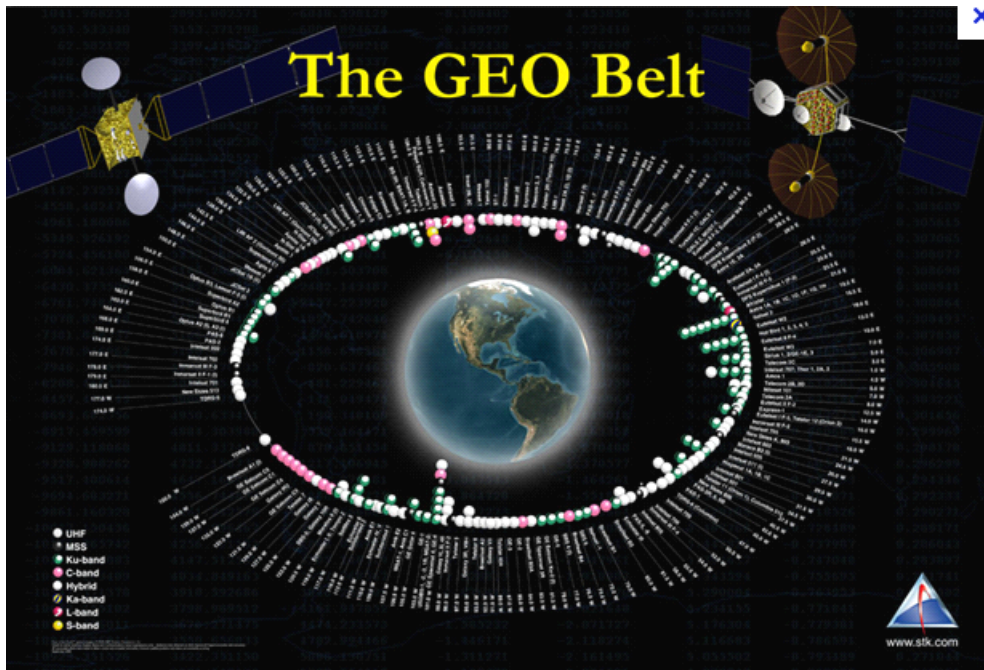
**CARRING THE MESSAGE BY THE DOVE:
((DOVE TIME)) [3]**



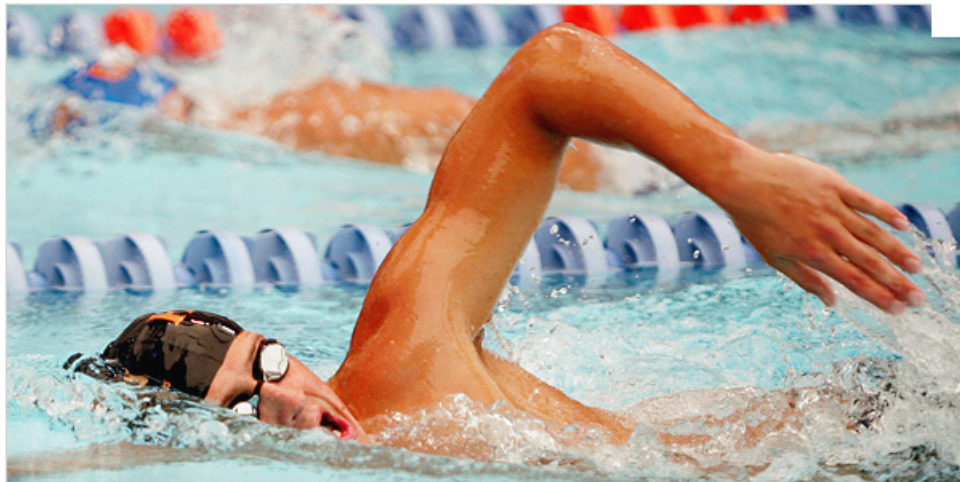
**ELECTROMAGNETIC WAVE TIME [4]
E.M. TIME ((LIGHT'S TIME))**



THE E.M. WAVES TIME [5]



**THE ART. SATELLITES BELT AROUND THE EARTH,
THESE SATELLITES USES THE EM. WAVES; ((LIGHT'S TIME:
E.M. WAVES TIME)) [6]**



THE SWIMMER : SWIMMER TIME [7]



WALKING MAN :

WALKING MAN TIME [8]

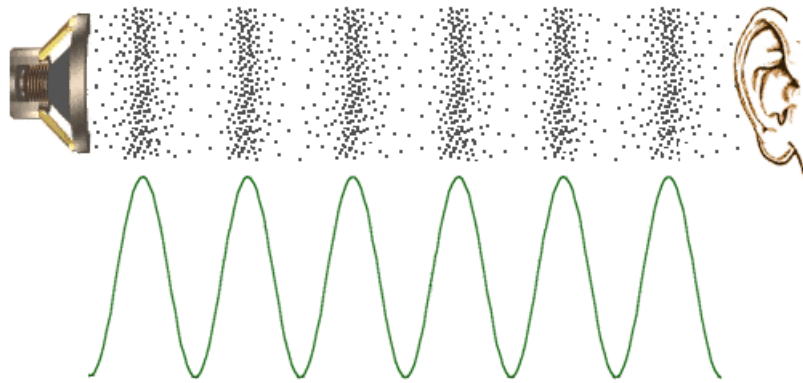
VK=HUMEN BEING WALKING SPEED



**AIRPLANE SPEED:
AIRPLANE TIME [8]
VK=200 M/S**



**THE CONCORD : CONCORD TIME [9]
VK=800 METERS/SECOND**



SOUND WAVE : SOUND TIME [10]

VK=325 METERS/SECOND



SPACE SHUTTLE: SPACE SHUTTLE TIME [11]

VK=5250 METERS/SECOND

VK=(1/2) W.Y. /HOUR



THE DFD :FD , ((THE DFD OR FD TIME))

((FD: FLYING DISK)) [12]

VK=HIGH

THE REFERENCE:

**[1] SPACE TIME AND GRAVITATION, BY : A.S. EDDINGTON,
PAGES:17-18, CAMBRIDGE UNIVERSITY PRESS,
COPYRIGHT: 1920.**

[2] <http://www.a7bash.com/vb/imgcache/2/502alsh3er.jpg>

[3] ALHALNEWS.com

**[4] [http://www2.nict.go.jp/wireless/spacelab/multifeederlink/
images/Fig.1.gif](http://www2.nict.go.jp/wireless/spacelab/multifeederlink/images/Fig.1.gif)**

[5] <http://www.intechopen.com/source/html/8510/media/image10.png>

**[6] [http://www.hobbyspace.com/AAdmin/Images/LivingSpace/
stk/geo_belt_1024.jpg](http://www.hobbyspace.com/AAdmin/Images/LivingSpace/stk/geo_belt_1024.jpg)**

**[7] [http://graphics8.nytimes.com/images/2008/03/19/fashion/
20fitn600.1.jpg](http://graphics8.nytimes.com/images/2008/03/19/fashion/20fitn600.1.jpg)**

**[8] [http://beyondthebottle.org/wp-content/uploads/2010
/01/airplane.jpg](http://beyondthebottle.org/wp-content/uploads/2010/01/airplane.jpg)**

[9] http://www.concordesst.com/pictures/gboag_home.jpg

**[10] [http://www.mediacollege.com/audio/images/loudspeaker-
waveform.gif](http://www.mediacollege.com/audio/images/loudspeaker-waveform.gif)**

[11] http://upload.wikimedia.org/wikipedia/commons/2/2a/Space_Shuttle_Atlantis_launches_from_KSC_on_STS-132_side_view.jpg

[12] http://www.gravitywarpdrive.com/Bob_Lazar_S4_Disc_Images/S4_Disc.gif

PART 4

KINDS OF RELATIVITY

THEY ARE :

- 1- THE RELATIVITY OF A SWIMMER,**
- 2- THE RELATIVITY OF A WALKING MAN ((OR WOMAN)),**
- 3- THE RELATIVITY OF A RUNNING MAN ((OR WOMAN)),**
- 4- THE RELATIVITY OF A SEA SHIP,**
- 5- THE RELATIVITY OF THE GRAY MARE , THE HORSE**
- 6- THE RELATIVITY OF CAR,**
- 7- THE RELATIVITY OF TRAIN,**
- 8- THE RELATIVITY OF AIRPLANE ((200 METERS/SECOND)),**
- 9- THE RELATIVITY OF THE CONCORD ((800 METERS/SECOND)),**
- 10- THE RELATIVITY OF A BIRD ((WHICH A BOUNDED MESSAGE TO ITS FOOT)),**
- 11- THE RELATIVITY OF THE SPACE SHUTTLE ((5250 METERS/SECOND)),**
- 12- THE RELATIVITY OF THE SOUND WAVE ((VOICE)) ((325 METERS/SECOND)),**
- 13- THE RELATIVITY OF SPACE SHIP,**
- 14- THE RELATIVITY OF THE DFD : THE RELATIVITY OF THE FD : THE RELATIVITY OF FLYING DISKS,**
- 15- THE RELATIVITY OF THE ANGLES,**
- 16- THE RELATIVITY OF THE SPIRIT**
- 17- THE RELATIVITY OF THE LIGHT WAVE ((THE ELECTROMAGNETIC WAVE)) ((2.99792458×10^8**

METERS/SECOND)),

**18- THE RELATIVITY OF NO TIME REQUIRED TIME
METHOD.**

-
-
-
-

•

PART 5

KINDS OF TIME

FROM EQ.(1) TIME MENTIONED IN PART 3, AND THERE ARE MORE THAN 18 VK VALUES , SO THE KINDS OF TIME ARE MORE THAN 18 KINDS.

THE TIME KIND IS NOT ONE, IT MULTY AS THE MULTY OF THE KINDS OF RELATIVITY, AND THE LATER AS THE MULTY OF THE METHODE THAT USED TO TRANSFORM THE INFORMATIONS.

TIME KINDS ARE :

- 1- THE SWIMMER TIME,**
- 2- WALKING MAN ((OR WOMAN)) TIME,**
- 3- RUNING MAN ((OR WOMAN))TIME ,**
- 4- SEA SHIPTIME ,**
- 5- THE GRAY MARETIME , THE HOURSE TIME ,**
- 6-CAR TIME ,**
- 7-TRAIN TIME ,**
- 8- AIRPLANE TIME ((VK=200METERS/SECOND)),**
- 9- THE CONCORD TIME ((VK=800 METERS/SECOND)),**
- 10- THE BIRD TIME,**
- 11- THE SPACE SHUTTLE TIME ((VK=5250 METERS/SECOND)),**
- 12- THE SOUND WAVE TIME((VOICE TIME)) ((VK= 325 METERS/SECOND)),**

**13- SPACE SHIP TIME,
14- ((THE DFD : THE FD :FLYING DISKS)) TIME,
15- THE ANGLES TIME,
16- THE SPIRIT TIME,
17- THE LEIGHT WAVE TIME ((THE ELECTROMAGNETIC WAVES TIME)) ((VK=C=2.99792458 *10^8 METERS/SECOND)),**

18- NO TIME REQUIRED METHOD, TIME=0 SECONDS, IT IS THE ABSOLUTE TIME, NOW HERE IS NOW AT 13000000000 LIGHT YEARS APART.

19- TIME OF ALLAH ((1 DAY=1000 MOONIC YEARS))

20- THE TIME OF THE IMAM THE MAHDI ((: IN IT THE RELATIVITY COME TRUE WITHOUT PRESENT OF IT'S CONDITION)), WE WILL TALK ABOUT THIS TIME.

-
-
-

NOTE: THE TIME OF LIGHT ((THE TIME OF THE ELECTROMAGNETIC WAVES)) IS THE THE EINSTEIN'S TIME.

PART 6

SOME KINDS OF TIME

ALLAH CREATED THE TIME.

((1)) ALLAH'S TIME

IN THE ALLAH'S TIME T=1 DAY =1000 YEARS (RELATIVITY: WE CAN FIND THE SPEED (V) OF THIS , FROM THE SPECIAL RELATIVITY OF LIGHT ((SPECIAL RELATIVITY OF THE DOCTOR ALBERT EINSTEIN)) EQUATION :

$$T(V)=T(V=0)* [1-V^2/C^2]^{(0.5)} \dots\dots\dots EQ.(1)$$

WHERE :

T(V): TIME OF SPEED (V),

T(V=0)= T0 = TIME OF WHAT MOST PEOPLE COMPUTE ((TIME OF 0 SPEED)),

V: SPEED (METERS/SECOND) ,

AND

C: THE SPEED OF LIGHT IN VACUUM =2.99792458*10⁸ METERS/SECOND

BY SOLVING THE EQUATION (1) FOR (V) WE GET:

$$V(T)=\pm C [1-(T^2/T0^2)]^{(1/2)} \dots\dots\dots EQ.(2)$$

**YOU ACCORDING TO THE RELATIVITY ASSUNPTION CAN
FIND THE SPEED OF THINGS NEAR THE LAHOOT,**

$$D=(354*30+11)/30= 10631/30$$
$$= 354.366666666666666666666666666667 \text{ DAYS}$$

**WHERE (D) REPRESENTS THE NUMBER OF DAYS IN THE
MOONIC YEAR ((BECAUSE THE KOR'AN IS IN THE MOONIC
YEARS)):**

BY PUTTING: T=1 DAY,

$$T_0=1000*354.366666666666666666666666666667$$

**IN THE EQUATION (2) WE WILL FIND THE SPEED OF
THINGS NEAR THE LAHOOT:**

FOR 1 DAY= 1000 YEARS

$$V(T)=\pm C [1-7.9633219301807609486762043491398*10^{-12}]^{(1/2)}$$

$$V(T)= \pm C [0.99999999999203667806981923905132]^{(1/2)}$$

$$V(T)= \pm 0.99999999999601833903490169271364 C$$

$$V(T)= \pm 2.9979245799880632807235052624698 *10^8$$

METERS/SECOND

((2)) THE ANGLES AND SPIRIT TIME :

**AND WE CAN GET THE SPEED OF ANGELS FROM THE
KOR'AN, ALLAH SAID : ((THE ANGELS AND THE SPIRIT
WINDING TO HIM IN A DAY IT'S MAGNITUDE 50000 YEARS)),
BY PUTTING: T=1 DAY,**

$T_0 = 50000 * 354.36666666666666666666666666667$

IN THE EQUATION (2) WE WILL FIND THE SPEED OF THE SPIRIT AND THE ANGELS):

FOR 1 DAY=50 000 YEARS

$V(T) = \pm C [1 - 3.1853287720723043794704817396559 * 10^{-15}]^{(1/2)}$

$V(T) = \pm C [0.9999999999999999681467122792769562]^{(1/2)}$

$V(T) = \pm 0.999999999999999840733561396384654 C$

$V(T) = \pm 2.9979245799999952253122894116068 * 10^8$

METERS/SECOND

OR IT ACCORDING TO THE TIME FIELD ((READ THE GREEN ISLAND BOOK OF THE SAME AUTHOR OF THIS BOOK)),

((3)) THE IMAM THE MAHDI TIME

THE IMAM THE MAHDI TIME :IN IT THE RELATIVITY COME TRUE WITHOUT AVAILABILITY OF IT'S CONDITION: T=0 OR SMALL WITHOUT ((V=C OR HIGH OR NEAR C)),

HENCE RELATIVITY : T=0 OR SMALL WITH ((V=C OR HIGH OR NEAR C)),

WHERE (C) IS THE SPEED OF THE LIGHT IN VACUUM, READ ((THE GREEN ISLAND)) BOOK OF THE SAME AUTHOR [1].

PART 7

THE IMAM THE MAHDI'S TIME

THE IMAM THE MAHDI'S TIME ARE NOT KNOWN WHAT IS IT IN THEORY, IN IT THE RELATIVITY COME TRUE WITHOUT THE COME TRUE OF IT'S CONDITION, AS WE SAID AND EXPLAINED IN PART 6.

MAY BE SOME KIND ((KINDS)) OF TIME ACTIVATED IN IT'S CASE.

PART 8

EINSTEIN'S TIME

LIGHT'S TIME

THE E.M. WAVE'S TIME

IT IS WIDE USED BY MOST OF PEOPLE, MOST OF COLLEGES.

PART 9

THE DIRECTIONS OF TIME

**THE DIRECTIONS OR THE VALUES SIGNS OF TIME ARE
THREE:**

0 : REPRESENTS "NOW" : THE PRESENT

- : REPRESENTS THE PAST,

AND

+ : REPRESENTS THE FUTURE,

IN THE ABSOLUTE TIME THERE IS ONLY THE (0).

PART 10

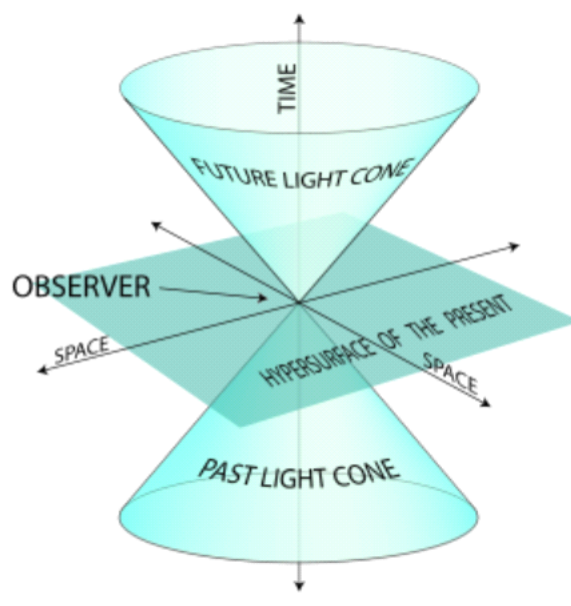
THE FIGURE OF TIME

BECAUSE THE THING USED TO TRANSFORM THE INFORMATION HAS A LIMITED SPEED , LIMITED VK, EXCIPT IN THE ABSOLUTE TIME WHICH THE VK IS HIGH,

SPEED= DISTANCE/TIME, TIME=0==>

SPEED (VK) = INFINITY.

THE TIME FIGURE IN CASE OF LIGHT IS A CONE,



THE LIGHT CONE : IS THE REPRESENTATION OF THE LIGHT'S TIME [1], THE FIGURE REPRESENTS HOW IS THE TIME PASSED AGAINST THE TRAVELLED DISTANCE BY THE LIGHT IN A MATTER OR VACUUM.

NOTE: IF WE PUTTED VK INSTEAD OF C ((I.E. USED ANOTHER THING TO TRANSFORM THE INFORMATIONS INSTEAD OF LIGHT)), THEN IF $VK=C$, THE LIGHT CONE RESULTED AS IN THE PREVIOUS FIGURE, IF $VK < C$, THEN THE TIME CONE WILL BE NARROW, AND SO ON, IF $VK=0$, THEN THE CONE WILL BE COINCIDE LINE WITH THE Y-AXES (-,+), BUT IF $VK=INFINITY$ ((THE ABSOLUTE TIME)), THEN THE CONE MOUTH WILL BE VERY LARGE, WILL COINCIDE WITH THE SPACE ((DISTANCE:X)) AXES TWO DIRECTIONS (-,+).

THE REFERENCES:

[1] [HTTP://en.wikipedia.org/wiki/Light_cone](http://en.wikipedia.org/wiki/Light_cone)

PART 11

TIME MESURING TOOL

IT IS THE WATCH



DIGITAL TABLE WATCH [1]

THE REFERENCES:

[1] http://www.pricemantra.com/ProductImage/0047abc3-2bfd-4250-af87-5033a858f5db_Casio_DQ_750F_1DF_DL023_Table_Alarm_Digital_Clock_523822659983180_1.jpg

PART 12

TIME PARTS

1. THE SECOND

THE SECOND IS (1/60) FROM THE MINUTE.

THE SECOND COUD BE DIVEDED TO (10) PARTS OR TO (100) PARTS , OR AS IN SCIENTIFIC RESEARCHES THE SECOND COULD BE CONSISTES OF (1000 000) PARTS AND (1000 000 000) PARTS ((NUCLEAR TIMES)).

2. THE MINUTE:

**EVERY MINUTE CONSISTES OF (60) SECONDS, AND (60)
MINUTES CONSISTES THE HOUR.**

3. THE HOUR

THE HOUR = 60 MINUTES= 3600 SECONDS

4.THE DAY :

DAY= 24 HOURS= 1440 MINUTES = 86400 SECONDS

5. THE WEEK

1 WEEK = 7 DAYS = 168 HOURS = 10080 MINUTES = 604800 SECONDS

| DAY NO. | IT'S NAME |
|----------------|------------------|
| | |
| 1 | SATURDAY |
| 2 | SUNDAY |
| 3 | MONDAY |
| 4 | TUESDAY |
| 5 | WEDNESDAY |
| 6 | THURSDAY |
| 7 | FRIDAY |

6. THE MONTH

**1 MONTH = ((29-30)) DAYS IN MOONIC CALENDAR
= ((28-31)) DAYS IN SUNNIC CALENDAR**

7. THE YEAR

1 YEAR = 12 MONTHS

1 MOONIC YEAR = ((354 DAYS IN SIMPLE YEAR , 355 DAYS IN A LEAP YEAR)) IN MOONIC YEAR ((CLAENDAR))

1 SUNNIC YEAR = ((365 DAYS IN A SIMPLE YEAR, 366 DAYS IN A LEAP YEAR))

NOTE:

EVERY 4 SUNNIC YEARS THERE IS 1 LEAP YEAR, AND EVERY 30 MOONIC YEARS; THERE ARE 11 LEAP YEARS IN THE CALENDAR.

BELOW ARE THE CONVERTION RELATION BETWEEN MOONIC AND SUUNIC YEARS;

**SUNNIC YEARS= (0.97020305726671229751311886835504) *
MOONIC YEARS**

**MOONIC YEARS = (1.0307120684789765779324616687047) *
SUNNIC YEARS**

8. THE DECADE:

THE DECADE CONSISTES OF (10) YEARS= 120 MONTHS

1 DECAD = 10 YEARS = 120 MONTHS

9. THE CENTURY :

1 CENTURY = 10 DECADES = 100 YEARS
= 1200 MONTHS

10. THE MILLENIUM :

1 MILLENIUM = 1000 YEARS

= 10 CENTURIES

= 100 DECADES

= 12000 MONTHS

NO. OF DAYS IN 1 SUNNIC MILLENIUM= DS

DS= (1000/4)*1 + 1000*365

=365250 DAYS

NO. OF DAYS IN 1 MOONIC MILLENIUM= DM

DM= (1000 /30)*11 + 1000* 354

= 354366.66666666666666666666666667 DAYS

NOTE:

1 MOONIC DAY= 1 SUUNIC DAY

PART 13

THE MOONIC AND SUNNIC YEARS

THE MOONIC YEAR CONSISTES OF 12 ROTATIONS OF THE MOON AROUND THE EARTH, BUT THE SUNNIC YEAR CONSISTES OF 1 ROTATION OF THE EARTH PLANET AROUND THE SUN.

SUNNIC YEARS= (0.97020305726671229751311886835504) *

MOONIC YEARS

MOONIC YEARS= (1.0307120684789765779324616687047)

SUNNIC YEARS

PART 14

THE STOPPING OF TIME

THE STOPPING OF TIME CAN BE HAPPEN IN TWO CASES :

1. IN THE LIGHT'S TIME : ((EINSTEIN'S TIME)):

THE SPECIAL RELATIVITY OF LIGHT (THE SPECIAL RELATIVITY OF ALBERT EINSTEIN) ((LIGHT'S TIME: EINSTEIN'S TIME)):

IT HAPPENED WHEN $V=C$, WHERE C IS THE SPEED OF LIGHT IN VACUUM

$T=T_0 [1-(V^2/C^2)]^{(1/2)}$ THE SPECIAL RELATIVITY EQUATION OF LIGHT ((OF ALBERT EINSTEIN)) OF TIME

$V=C \implies$

$T=0$ TIME STOPPING :

IN IT; THINGS NEED NO TIME TO HAPPENED ((TO HAD HAPPENED))

2. THE IMAM THE MAHDI'S TIME :

LIKE : MINUTES COUNTER STOPPING

**T=0 MINUTES UNTIL $v > c$,
UNTIL $v=0$ METERS/SECOND**

**IN SPITE OF THAT THE SECONDS COUNTER OF THE
WATCH IS STILL COUNTING.**

**IN THIS TIME ((THE IMAM THE MAHDI'S TIME)) WE CAN
SAY THAT THE SPECIAL RELATIVITY OF LIGHT ((OF
ALBERT EINSTEIN)) CAN BE COME TRUE WITHOUT IT'S
CONDITION.**

**READ ((THE GREEN ISLAND)) BOOK FOR THE SAME
AUTHOR OF THIS BOOK.**

PART 15

USING TIME TO REPRESENTS DISTANCES

| TIME KIND | MEASURING UNIT | USED IN |
|-----------------------------------------------------|--------------------------------|---------------------------------------------------------------------------------------------------|
| LIGHT'S TIME ((EINSTEIN'S TIME)) | LIGHT YEAR | ASTRONOMY |
| WALKING MAN (WOMAN) TIME | WALKING YEAR | KOR'AN, HADITH, AND IMAM ALI WORDS ((: ASTRONOMY)) |

SPEED OF LIGHT (C) = $2.99792458 * 10^8$ METERS/SECOND

SPEED OF HUMEN BEING (SH) = 106.3008333 KM/DAY
((TAKEN FROM KOR'AN))

SH= 1.23033371875 METERS/SECOND

NOTE: THE EARTH'S PLANET CIRCUMESTANCES IS ABOUT 1 WALKING YEAR, THE MOON'S DISTANCE FROM EARTH IS 10 WALKING YEARS, AND THE DIFFERENCE BETWEEN IT'S NEAREST AND FARTHEST POINT FROM EARTH IS ABOUT 1 WALKING YEAR, AND THE DISTANCE OF THE SUN FROM THE EARTH IS 3750 WALKING YEARS.

THE SYMBOL OF THE LIGHT YEAR IS (L.Y.)

THE SYMBOL OF THE WALKING YEARS IS (W.Y.)

بِسْمِ اللَّهِ الرَّحْمَنِ الرَّحِيمِ

**THE AUTHOR OF THE BOOK : MASTER OF SCIENCE IN
PHYSICS FROM THE UNIVERSITY OF BAGHDAD,
DEPARTMENT OF PHYSICS, COLLEGE OF SCIENCE,
ALJADRIEA CAMPUS, BAGHDAD, IRAQ. :**

OSAMA KHALEIL ONAIED.

EMAIL:

OSAMA1978ATCBDATE@gmail.com

TELEPHONE: 009647810285448



THE AUTHOR'S PICTURE

**HOUSE ADDRESS: IRAQ,SEMAWA, OM ILISAFEIR,
(RAWDAT=CHILDREN HOUSE) ILABEIR STREET, NEAR THE
ELECTRICITY GENERATOR, HOUSE NUMBER=5, DOOR IN
SERIES FROM SOUTH TO THE NORTH=8.**

POST: IRAQ, SEMAWA POST OFFICE, BOX:230.

**DEGREE: MASTER OF SCIENCE IN PHYSICS, FROM THE
UNIVERSITY OF BAGHDAD, COLLEGE OF SCIENCE
(MIXED), DEPRATMENT OF PHYSICS, THE JADRIEA
CAMPUS, THE SEMIISLAND REGION IN BAGHDAD (EAST
THE TIGRIS), BAGHDAD, IRAQ, ARAB HOMELAND.**

DATE: THIS YEAR IS

2013 SUNNIC AFTER THE TRUE CHRIST BIRTH

2075 MOONIC AFTER THE TRUE JESUS BIRTH

**1391 SUNNIC AFTER THE MIGRATION OF THE
PROPHET MOHAMMAD FROM MAKKA TO THE
MADINA**

**1434 MOONIC AFTER THE PROPHET MOHAMMAD
MIGRATION,**

**(1178) MOONIC AFTER THE TRUE IMAM MAHDI
BIRTH IN THE ASKAR (SAMARRA').**

**(1142) SUNNIC AFTER THE TRUE IMAM THE MAHDI
BIRTH IN THE ASKAR**

**(1441 SUNNIC) AFTER THE BIRTH OF THE PROPHET
MOHAMMAD**

**(1486 MOONIC) AFTER THE BIRTH OF THE PROPHET
MOHAMMAD**

(1458 MOONIC) AFTER THE BIRTH OF THE IMAM ALI

(1414 SUNNIC) AFTER THE BIRTH OF THE IMAM ALI

THE AUTHOR'S WEBSITES ARE :

[HTTP://OSAMAKHALEILNAIED.WEBS.com,](http://OSAMAKHALEILNAIED.WEBS.com)

[HTTP://OSAMAKHALEILENAIED.WEBS.com,](http://OSAMAKHALEILENAIED.WEBS.com)

[HTTP://ISLAMANDPHYSICS.WEBS.com,](http://ISLAMANDPHYSICS.WEBS.com)

AND

[HTTP://DOCTORALBERTEINSTEIN.WEBS.com](http://DOCTORALBERTEINSTEIN.WEBS.com)

FACEBOOK: OSAMA KHALEIL ONAIED